



Effect of ambient temperature and restricted feeding on the production of rabbit does and their kits[‡]

Zsolt Szendrő^{1*}, Zoltán Papp², Károly Kustos³

¹Kaposvár University, Kaposvár, Hungary; ²University of Veterinary Medicine, Budapest, Hungary;
³Szent István University, Gödöllő, Hungary

ABSTRACT - Thirty-six lactating New Zealand White rabbit does were divided into 6 groups according to ambient temperature and feed intake. The does were kept at 20 °C during pregnancy and at kindling, then they were put into climatic chambers at temperatures of 5, 15, 23 or 30 °C. One part of the does were fed *ad libitum* (5A, 15A, 23A and 30A), two other groups were housed at 15 °C, but they received the same amount of pellet as the does' intake at 23 °C or 30 °C (15/23R and 15/30R). The litter sizes were equalized to seven. The weight of does, milk production, feed intake and water intake were recorded daily. Heat stress reduced milk yield (148, 152, 150 and 106 g/day), feed intake (287, 279, 260 and 179 g/day) and water intake (497, 512, 526 and 428 g/day), but increased the water/feed ratio (1.73, 1.84, 2.02 and 2.39) in the groups of 5A, 15A, 23A and 30A, respectively. Body weight of does decreased at 23 °C and 30 °C by 5.6% and 8.5%, respectively, compared to 15 °C. Comparing the groups of rabbits kept at 23 °C and 30 °C fed *ad libitum* (23A and 30A) and the data obtained for groups of 15/23R and 15/30R it was observed that the milk yield decreased by 8.0% and 2.5%, water intake increased by 8.6 and 13.3%, and the feed/water ratio was higher by 0.18 and 0.18, respectively. The effect of heat stress was less significant on kits than on does. It can be concluded that the high ambient temperature mainly affected the milk production through the reduction of feed intake.

Keywords: rabbit does, ambient temperature, restricted feeding, milk production, feed intake, water intake

INTRODUCTION

Recent weather reports show that the incidences of summer heat waves have been increasing with rising temperature. Probably the global warming will have severe impacts on the physiology and reproduction of mammals of both sexes (Takahashi, 2012). The effect of ambient temperature on animals' production has been investigated for a long time. Nowadays, due to the global warming, more and more researchers work on this area (Gill *et al.*, 2010). The ambient temperature has influenced some physiological parameters of domestic rabbits (Boiti *et al.*, 1992; Chiericato *et al.*, 1997; Kalaba, 2012) and directly or indirectly influenced the feed intake, the reproduction and production performance (Stephan, 1980; Fernández-Carmona *et al.*, 1995; Marai *et al.*, 2002; Mousa-Balabel, 2004; Zeferino *et al.*, 2011; Bakr *et al.*, 2015).

[‡]Note: This paper is a new evaluation of the results of a previous proceeding published on the 2. International Conference on Rabbit Production in Hot Climates, Adana, Turkey (Szendrő *et al.*, 1999).

*CORRESPONDING AUTHOR

Kaposvár University, Faculty of Agricultural and Environmental Sciences

✉ H-7400 Kaposvár, Guba S. str. 40., ☎ +36-82-505-800

E-mail: szendro.zsolt@ke.hu

Studies connected to milk production of rabbit does have been published since the 1960s. First results were summarized by *Lebas* (1975), later it was reviewed by *Maertens et al.* (2006). Connection between ambient temperature and milk production was discussed by *Rafai and Papp* (1984), *Fernández-Carmona et al.* (1995, 2000), *Askar and Ismail* (2012). All these experiments showed significant decrease in milk production of does kept under high temperature condition.

The aim of the experiment was to investigate the direct and indirect effect of ambient temperature of 5 °C, 15 °C, 23 °C and 30 °C on production of rabbit does and their kits. Beside the effect of temperature the performance of rabbits kept on 15 °C, but fed restricted on the levels of intake at 23 °C or 30 °C ambient temperature was also tested.

MATERIAL AND METHODS

The experiment was performed on multiparous New Zealand White does at the University of Veterinary Medicine (Hungary). The pregnant does (n=36) were fed *ad libitum* at ambient temperature of 20 °C till parturition. The diet contained 11.4 MJ DE/kg and 14% crude protein. Water was freely available. Six groups were formed, each group contained six does, and they were placed into climatic chambers. The following treatments were established:

- 5A: does kept on 5 °C, fed *ad libitum*,
- 15A: does kept on 15 °C, fed *ad libitum*,
- 23A: does kept on 23 °C, fed *ad libitum*,
- 30A: does kept on 30 °C, fed *ad libitum*,
- 15/23R: does kept on 15 °C and fed with daily amount of feed consumed by does in group 23 A,
- 15/30R: does kept on 15 °C and fed with daily amount of feed consumed by does in group 30 A.

At parturition the litter size was equalized to seven and the died kits were replaced with others out of the experiment with similar age and weight than the died ones. The daily milk production was measured by the difference in body weight of does immediately before and after nursing. The weight of does and litter, feed and water consumption were measured daily in the morning.

One-way ANOVA and T-test were applied for data evaluation.

RESULTS

Feed intake of does

After parturition the feed intake increased in each group (*Figure 1*), however the consumption of group 30A decreased already after the second day of lactation. During the next weeks the feed consumption of 30A does varied between 150 and 200 g/day. The consumption grew rapidly in the other groups and it reached higher level than 300 g/day between days 10 and 26 in 5A and 15A groups, but it was lower (between 250 and 300 g/day) in 23A group. The average daily feed intake of 5A, 15A, 23A and 30A does was 287, 279, 260 and 179 g, respectively. The differences between 15A and 23A, and between 15A and 30A group were 6.8% and 35.8%, respectively. The consumption of groups 23A and 15/23R and groups 30A and 15/30R was similar, which corresponds to the experimental design.

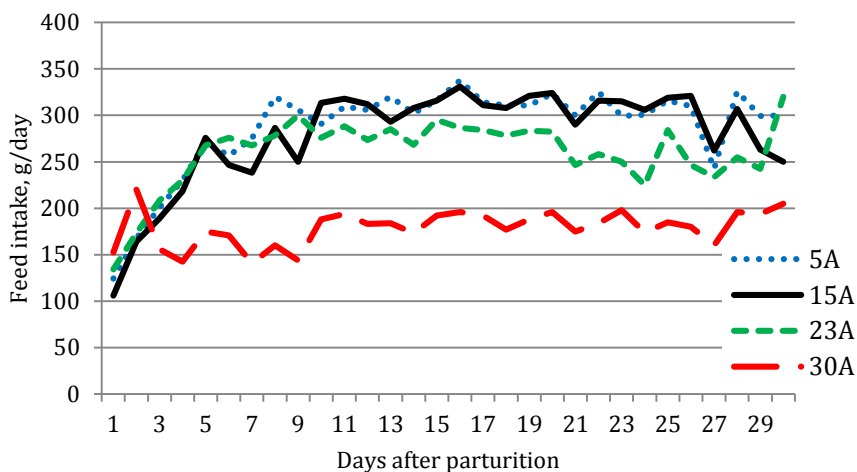


Figure 1: Effect of ambient temperature on feed intake of lactating does

Water consumption of does

In water consumption of experimental groups there were not as big differences as in feed consumption (*Figure 2*). Only the 30A does drank a little less water than does in the other groups. The average water consumption of 5A, 15A, 23A and 30A does was 497, 512, 526 and 428 g/day, respectively. Compared to 15A group, the 5A and 30A does drank less water by 2.9% and 16.4%, respectively, and 23A does drank 2.7% more water.

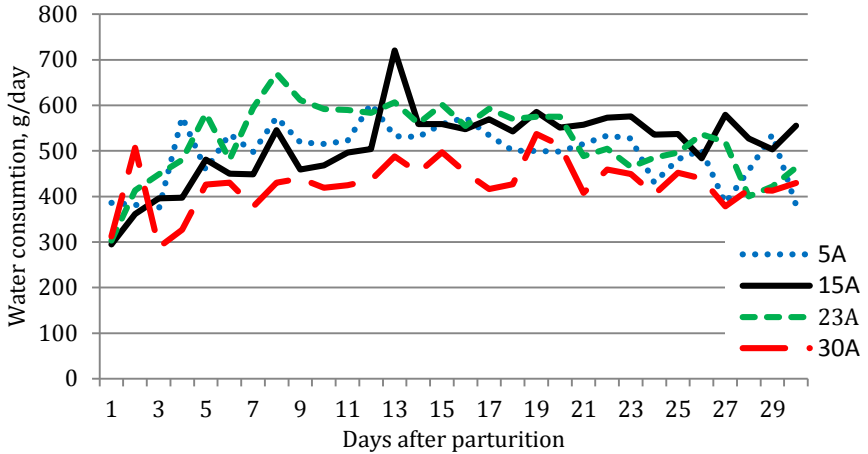


Figure 2: Effect of ambient temperature on water consumption of lactating does

The average water consumption of groups of 15/23R and 15/30R (571 and 428 g/day, respectively) was more than that of 23A and 30A does by 8.6% and 13.3%, respectively (*Figure 3*).

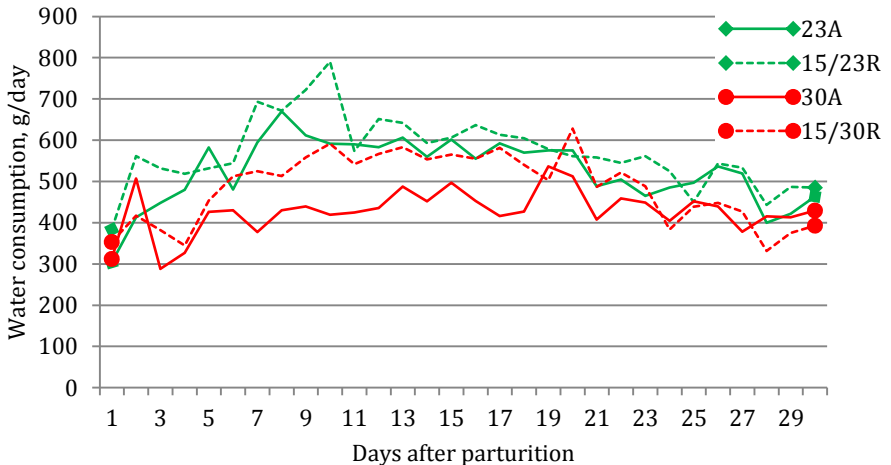


Figure 3: Effect of ambient temperature and feed restriction on water consumption of lactating does

The ratio of water per feed intake increased with increasing ambient temperature; they were 1.73, 1.84, 2.02 and 2.39 in groups of 5A, 15A, 23A and

30A, respectively. Compared to *ad libitum* groups higher values were found when does were fed restricted: between groups of 23A and 15/23R by 0.18, and between groups of 30A and 15/30R by 0.32.

Body weight of does

Few days after parturition the body weight of does increased (*Figure 4*). It was the highest in groups 5A and 15A (about 3800 g). The highest body weight of 23A does was measured at day 9 (3658 g) and it slowly declined till the end of the experiment (day 30) to 3470 g. The body weight of 30A does decreased faster and reached the lowest value at day 27 (3368 g). The average body weights of 5A, 15A, 23A and 30A does were 3793, 3785, 3571 and 3463 g, respectively. Compared to 15A group the body weight decreased by 5.7 and 8.5% in groups 23A and 30A, respectively.

Significant differences were found between groups 23A and 15/23R, and between groups 30A and 15/30R at the end of the experiment (*Figure 5*). These differences between 23A (3470 g) and 15/23R (3653 g), and between 30A (3387 g) and 15/30R (3519 g) groups were 3.9% and 3.0%, respectively, in favour of restricted does.

Milk production

The milk production curves of 5A, 15A and 23A does increased until day 20 of lactation with highest values of 201, 217 and 208 g/day, then it began to decline (*Figure 6*). Significantly lower milk production was measured in 30A group with 130 g/day at day 20. The average daily milk production of 5A, 15A and 23A does were similar (148, 152 and 150 g/day), however significantly lower production (by 29%) was observed in 30A group (106 g/day).

The average daily milk production differed between 23A and 15/23R groups (150 and 138 g, respectively), while the difference between 30A and 15/30R groups was inconsiderable (106 and 102 g, respectively), however it depended on the stage of lactation (*Figure 7*). Higher milk production was found in 23A group than in 15/23R group during the whole lactation period, however 15/30R does produced more milk in the first half of lactation than 30A does, while in the second half of lactation the order of the groups reversed, at day 30 of lactation the produced amounts of milk were 79 g and 52 g in groups of 30A and 15/30R, respectively.

Feed consumption of kits

The feed consumption of kits in groups 5A, 15A and 23A was similar (*Figure 8*) with a slight increasing tendency (12.2, 12.5 and 12.6 g, respectively), while significant lower consumption (9.93 g) was observed in 30A group.

Significant differences were found between the *ad libitum* and restricted fed groups (Figure 9): the 23A kits consumed more feed than the 15/23R group (12.6 and 10.9 g/day, respectively), while 30A kits consumed less pellet than the kits in 15/30R group (9.9 and 12.5 g/day, respectively).

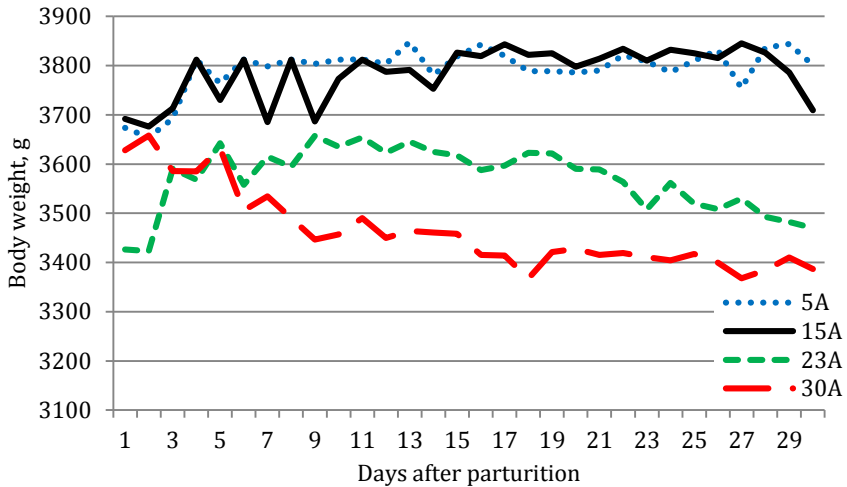


Figure 4: Effect of ambient temperature on body weight of lactating does

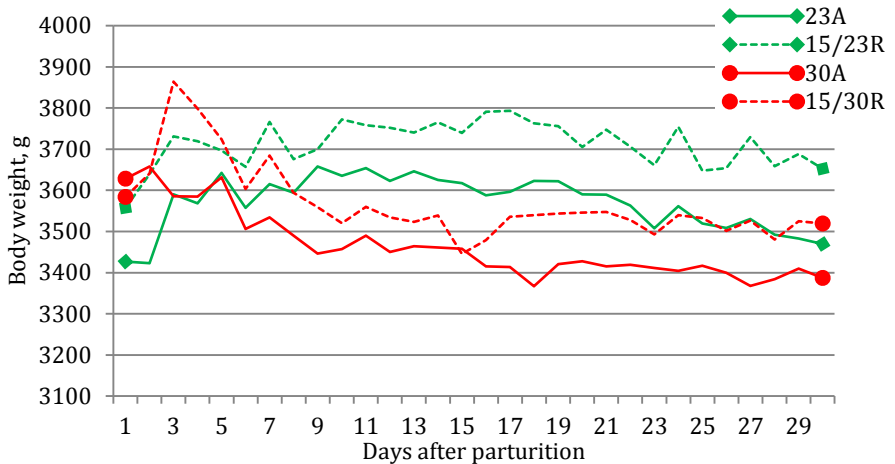


Figure 5: Effect of ambient temperature and feed restriction on body weight of lactating does

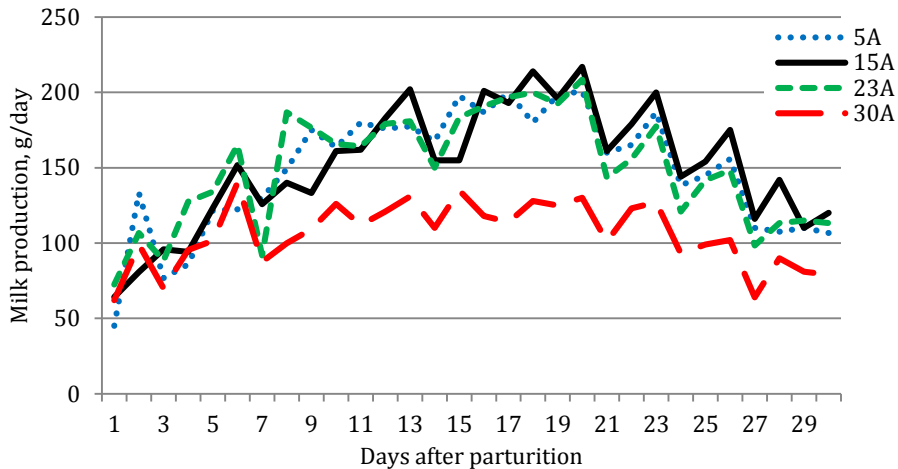


Figure 6: Effect of ambient temperature on daily milk production of does

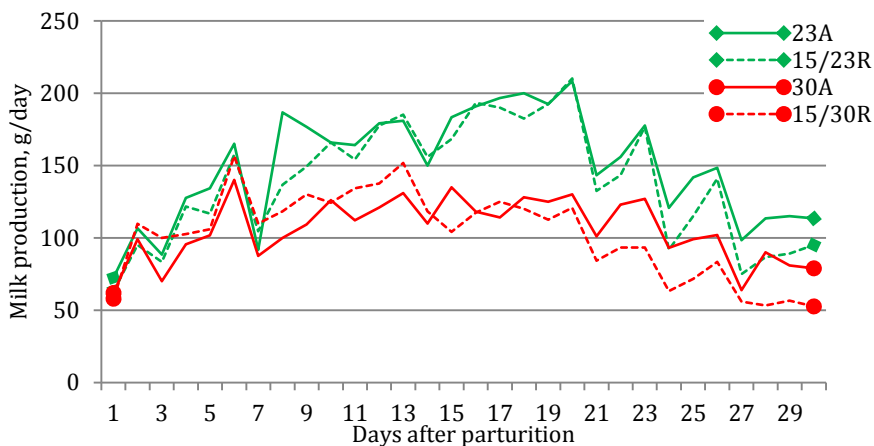


Figure 7: Effect of ambient temperature and feed restriction on daily milk production of does

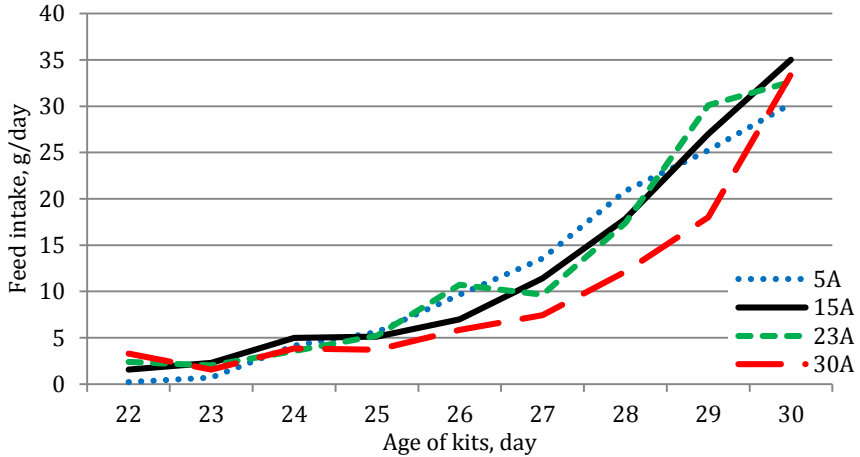


Figure 8: Effect of ambient temperature on feed consumption of kits

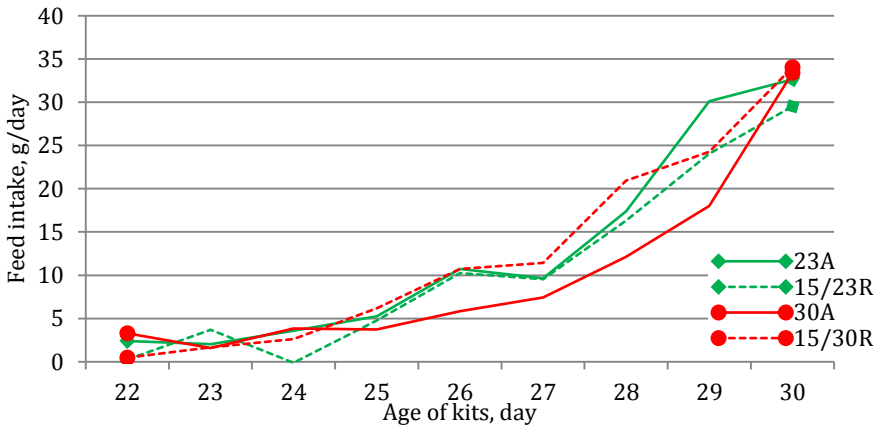


Figure 9: Effect of ambient temperature and feed restriction of rabbit does on feed consumption of kits

Water consumption of suckling rabbits

Kits in groups 5A and 15A drank similar amount of water (25.9 and 25.5 g/day, respectively). Rabbits in group 23A drank significantly higher amount of water between days 22 and 30 (36.6 g/day) (Figure 10), while in 30A group kits drank more than double amount of water (74.2 g/group) than in 23A group.

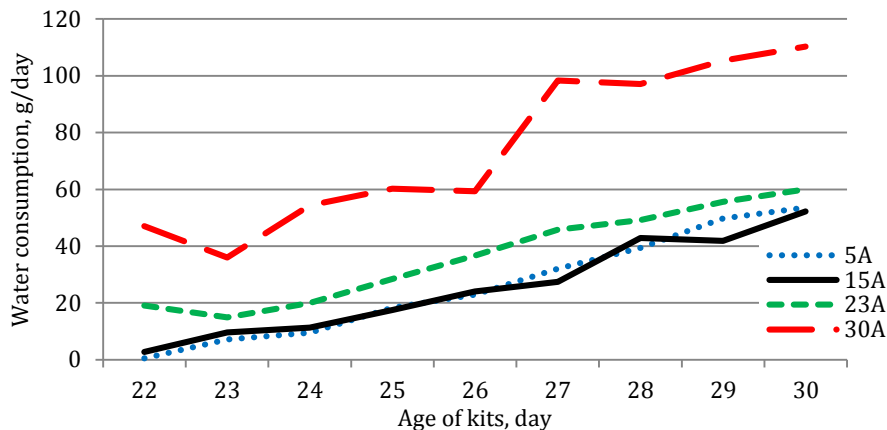


Figure 10: Effect of ambient temperature on water consumption of kits

The water consumption of restricted groups (15/23R and 15/30R) was the same (22.5 and 22.0 g/day, respectively), however it was significantly lower than that of the 23A and 30A kits (Figure 11).

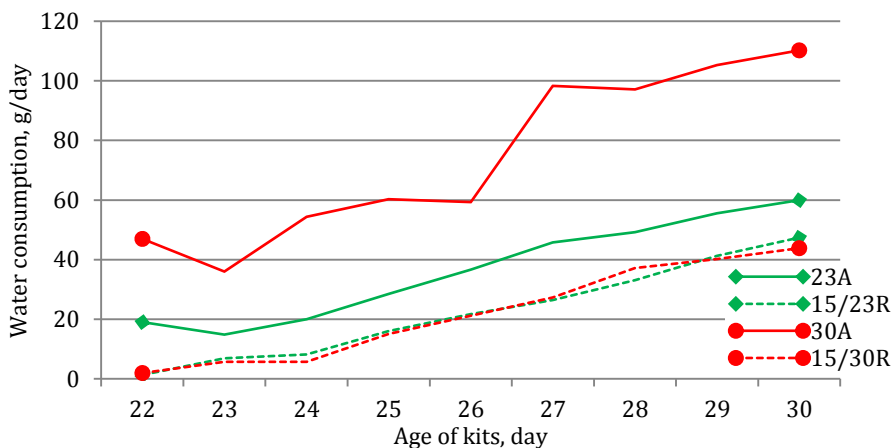


Figure 11: Effect of ambient temperature and feed restriction of rabbit does on water consumption of kits

Litter weight

Connection was observed between milk production of does and growth of litters. No significant differences were observed in litter weight till 9 days of

age. From the time, when the milk production of group 30A was lagging behind the other groups, there was also a significant difference in litter weight (Figure 12 and 13).

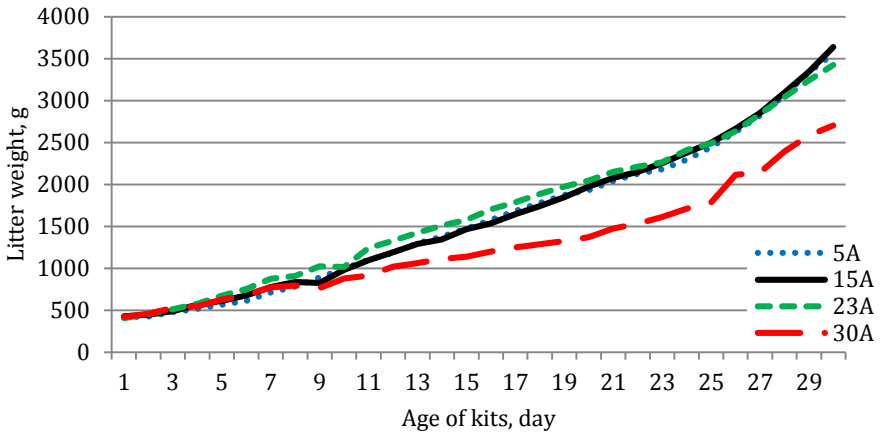


Figure 12: Effect of ambient temperature on litter weight

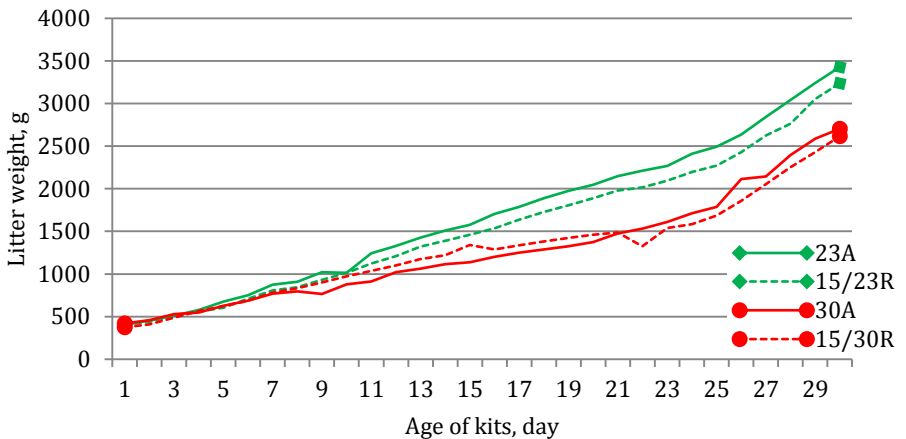


Figure 13: Effect of ambient temperature and feed restriction of rabbit does on litter weight

DISCUSSION

Heat is one of the most important climatic factors, which may affect rabbit production in hot climates (tropics or hot summer). The environment is sometimes defined by the season of the year and its effects are evaluated. In hot climate or in summer, despite the high temperature during day, it is lower in the night, when the rabbits are more active and they consume more feed. Several times controlled environments (climatic chambers) are used. However, the ambient temperature could be the same in both cases, but in climatic chamber temperature can remain high for 24 hours. This is why the effect of high temperature is more significant if climatic chamber is used than under natural conditions. In the present experiment rabbits were kept in climatic chambers without any change of temperature throughout the experiment.

Rabbits are very sensitive to high ambient temperatures since they have few functional sweat glands limiting their ability in eliminating excess body heat (*Maya-Soriano et al.*, 2015). As a homeothermic animal, they can regulate the heat input and output of their bodies using physical, morphological, biochemical, and behavioural processes (*Marai and Habeeb*, 1994).

The performance of rabbit does

Feed intake, body weight and milk production of does are in close connection with each other, therefore we evaluated them together.

Though 5 °C is lower than the optimal temperature for rabbits, it hardly affected the production of does, only slightly less water consumption was observed compared to the rabbits at 15 °C.

According to *Marai and Habeeb* (1994) and *Verga et al.* (2007) the ideal ambient temperature range should be 16-21°C for rabbit does. In case of high ambient temperature a decrease in feed intake is the most important reaction (*Marai et al.*, 2002). Based on opinion of *Mousa-Balabel* (2004), when rabbits are exposed to high ambient temperature, there is an inhibition of the hypothalamic appetite centre, hence feed intake is reduced in order to diminish body heat production. The lower performance of does kept on warm or hot climates could be also in connection with the lower digestibility of diet; the digestibility coefficients of dry matter and crude protein declined by about 8% due to the heat stress (*Marai et al.*, 2001).

In the present experiment the decreased feed intake led to a decline in body weight and milk production of does. It confirms the results of *Maertens and de Groote* (1990), who evaluated the effect of high ambient temperature during

short (1-week) period of lactation and reported 11% decrease in feed intake and 9% in milk production. In accordance to findings of other authors (e.g. *Simplicio et al.*, 1988; *Fernández-Carmona et al.*, 1995) the high ambient temperature had a negative effect on the milk production. It seems that lactating does react very sensitive to higher ambient temperatures; because in the present experiment their feed intake declined at 23 °C. However, we observed only a slight decline in milk production, but body weight of does decreased significantly. The experimental results of *Rafai and Papp* (1984) also showed that at 25°C a noticeable reduction in feed intake started, and subsequently milk yield, litter weight and doe weight were affected.

In the present experiment, the decrease in feed consumption and milk production were even more significant at 30 °C. Comparing the feed intake of lactating does in traditional building at 30 °C, similarly to our result, a 34% decline was observed by *Fernández-Carmona et al.* (1995). In the experiment of *Papp et al.* (1983) body weight of does kept on 10 °C and 15 °C increased, at 23 °C remained unchanged, but at 30 °C definitely decreased between days 6 and 29 of lactation. *Fernández-Carmona et al.* (1995) housed does at 30 °C and observed 32% lower milk yield. *Rafai and Papp* (1984) found a decrease of 7.7 g in milk yield per day with each centigrade above 20°C; and it was the highest in the 3rd week of lactation. *Bakr et al.* (2015) compared two groups of does. One group was housed in comfort condition (18-22°C) and in the other group Mediterranean summer was simulated (24°C at 08:00 h, increasing up to 29°C until 11:00 h; maintenance at 29°C to 31°C for 4 h and decreasing to about 24°C to 26°C around 17:00 h until 08:00 h of the following day). Under high ambient temperature the feed intake, body weight of does and weaning weight of kits decreased by 9.4%, 6.2% and 8%, respectively, and no significant differences were found in water intake and milk production of does, because of fluctuation of heat during the day. Daily 8-hour high heat stress (37 °C) resulted strong negative effect on milk yield (24-29%) compared to group reared in comfort condition (*Askar and El Ismail*, 2012). *Ayyat et al.* (1995) also observed lower milk yield in hot season (summer) than in winter or in spring.

The design of experiment (feed restriction of does at 15 °C for similar levels than the does consumed at temperature of 23 °C and 30 °C) gave opportunity to evaluate the effect of high ambient temperature (23 °C and 30 °C) and the lower feed intake at the same temperature without heat stress.

Comparing the differences between the average body weights of 15A and 23A groups (214 g), and between 15A and 15/23R groups (73 g) demonstrated that 34% of the weight loss at 23 °C was caused by the lower feed intake. Analyzing the difference in feed intake between 15 °C and 30 °C,

68% of the weight loss at 30 °C was caused by the lower feed intake. These results show the role of lower feed intake and the physiological factors on weight loss caused by high ambient temperature.

Due to the similarity in average milk production of the groups of 30A and 23/30 R during the whole lactation, and because the milk production was higher in 23A group than in 15/23R does at the end of lactation, it can be stated that the effect of high ambient temperature was mainly based on the lower feed intake. It seems that the change in milk production was independent of the body weight loss. Probably, rabbit does mobilized the fat and protein of body for milk production. This finding is in accordance with *Parigi-Bini et al.* (1992), *Xiccato* (1996), *Feugier* and *Fortun-Lamothe* (2006), *Xiccato* and *Trocino* (2010).

Rabbit is largely dependent on respiratory evaporation for regulation of body temperature in hot conditions. The significance of the increase of respiration is that it enables the rabbit to dissipate heat by vaporising high moisture through the respiratory air, which accounts for about 30% of the total heat dissipation (*Fayez et al.*, 1994). This is why the respiration rate increased from 69 to 190 breaths per minute when the ambient temperature raised from 18 to 33°C (*Johnson et al.*, 1957). The high water consumption in the hot period helps the animal to increase the heat loss through water respiratory vaporization (*Badr*, 2015). Rabbits need to make up for water loss. *Stephan* (1980) recorded 45% increase in water intake of growing rabbits at 38°C compared to 18°C. Similarly to our results, in the experiment of *Marai et al.* (2001), the water intake and the water/feed ratio of does significantly increased. In the present experiment the water to feed ratio increased from 1.84 to 2.39 between temperatures 15 °C and 30 °C.

Kits' performance

The effect of high ambient temperature on kits is different from the adult rabbits, because they born hairless, so their optimal ambient temperature is higher, around 38°C at birth and 30°C at 14 days of age (*Hull et al.*, 1986). This is why 23 °C could be warm for does, but at the same time it could be cold for kits. We have to take into consideration that the performance of kits is affected indirectly by the effect of heat on their mother and directly on kits.

There were not any differences in feed intake of kits and litter weight when they were reared at 5 °C or 15 °C, however it was lower than at the optimal temperature.

Solid feed intake of kits starts at about 18 to 21 days of age (*Maertens and De Groot*, 1990). The degree of increment in feed intake of kits depends on milk production of does (milk intake of kits). There were only slight differences in feed intake between groups of 5A, 15A and 23A, which showed that the effect of ambient temperature was inconsiderable till 23 °C, but marked decline was observed in group 30A. It was confirmed by the difference between the 30A and 15/30R groups, which also showed the effect of high ambient temperature on feed intake of kits. It seems that the effect of ambient temperature on kits' feed consumption was much less than on their mothers.

Growth of kits mainly depends on the milk production of does, the milk intake of kits (*Maertens et al.*, 2006) and their own solid feed intake. In the present experiment the difference between 30A and the other groups started at about 10 days of lactation and it increased till kits started to consume solid feed (at about 21 days of age), which was caused by the lower milk production of 30A does. The difference remained similar till weaning, which showed that the lower feed intake of kits was mainly related to the smaller weight, the lower requirement of maintenance. *Ayyat et al.* (1995) described that parallel with milk yield the litter weight was also low in summer. Due to the heat stress, lower litter weight at weaning was observed by *Marai et al.* (2001). *Marco-Jiménez et al.* (2017) received 14% difference in individual body weight of kits at 30 days of age between temperatures of 14-20°C and 25-36°C. *Piles et al.* (2013) proved that the individual weaning weight decreased by 14 g per each centigrade when temperature was higher than 21°C.

Results show that the water intake of kits depends more on ambient temperature than that on feed intake. The kits in 23A group drank more water than the 15A kits, but 30A kits drank double amount of water than 23A kits. The same result was shown by the ratios of water/feed consumption, which were a little bit higher than 2 in groups 5A and 15A, but it was significantly higher in 23A kits (2.90) and it was much higher in A30 group (7.48). According to these results the water intake could be independent of the mother, it depends on the ambient temperature, and the respiration rate of kits could be high at higher ambient temperature to lose the extra heat.

CONCLUSIONS

Based on the results it can be stated that:

- housing of rabbit does and their kits at 5 °C hardly modify their production compared to the optimal (15 °C) ambient temperature;
- rearing rabbit does at 23 °C, their feed intake decrease non-significantly 10 days after parturition compared to rabbits 5 and at 15 °C. However, there

is a significant decrease in body weight, while the milk production is not affected;

- at 30 °C the heat stress is very high, rabbit does consume much less pellet, their weight and milk production is much more less than that of rabbits at 5, 15 and 23 °C; 68% of the weight loss was based on the lower feed intake, in case of milk production mainly the lower feed intake was responsible for the low milking level;

- in kits the main effect of high ambient temperature was the high water intake and because of the lower milk and feed intake their weight decreased significantly.

ACKNOWLEDGEMENTS

Writing the paper was supported by project of GINOP-2.3.4-15-2016-00005, and it was also supported by the EFOP-3.6.3-VEKOP-16-2017-00008 project. The project is co-financed by the European Union and the European Social Fund.

REFERENCES

- Askar A.A., Ismail I.El. 2012. Impact of heat stress exposure on some reproductive and physiological traits of rabbit does. *Egypt. J. Anim. Prod.*, 49, 151-159.
- Ayyat M.S., Marai I.F.M., El-Sayiad Gh.A. 1995. Genetic and non-genetic factors affecting milk production and preweaning litter traits of New Zealand White does under Egyptian conditions. *World Rabbit Sci.*, 3, 119-124. DOI: [10.4995/wrs.1995.250](https://doi.org/10.4995/wrs.1995.250)
- Badr M.M.A. 2015. Effect of feeding time and vitamin C levels on performance of rabbit does during the mild and hot seasons in Egypt. *Nat. Sci.*, 13, 25-30.
- Bakr H.M., Tusell L., Rafel O., Terré M., Sánchez P.J., Piles M. 2015. Lactating performance, water and feed consumption of rabbit does reared under a Mediterranean summer circadian cycle of temperature v. comfort temperature conditions. *Animal*, 9, 1203–1209. DOI: [10.1017/s1751731114003310](https://doi.org/10.1017/s1751731114003310)
- Boiti C., Chiericato G.M., Filotto U., Canali C., 1992. Effects of high environmental temperature on plasma testosterone, cortisol, T3 and T4 levels in the growing rabbit. *J. Appl. Rabbit Res.*, 15,447-455.
- Chiericato M.G., Rizzi C., Boiti C., Canali C., Rostellato V. 1997. Endocrine response of hybrid rabbits of different ages and under two environmental temperature conditions. *Tropicultura*, 15, 22-26.
- Fayez I., Marai M., Alnaimy A., Habeeb M. 1994. Thermoregulation in rabbits. *Cahiers Options Méditerranéennes*; n. 8, 33-41.
- Fernández-Carmona J., Cervera C., Sabater C., Blas E. 1995. Effect of diet composition on the production of rabbit breeding does housed in a traditional building and at 30°C. *Anim. Feed Sci. Techn.*, 52, 289-297. DOI: [10.1016/0377-8401\(94\)00715-1](https://doi.org/10.1016/0377-8401(94)00715-1)
- Fernández-Carmona J., Santiago S., Alqedra I., Cervera C., Pascual J.J., 2000. Effect of lucerne-based diets on the reproductive performance of rabbit does at high environmental temperatures. In *Proc.: 7th World Rabbit Congress*, Valencia, Spain, C, 203-208.
- Feugier A., Fortun-Lamothe L. 2006. Extensive reproductive rhythm and early weaning improve body condition and fertility of rabbit does. *Anim. Res.*, 55, 459-470. DOI: [10.1051/animres:2006025](https://doi.org/10.1051/animres:2006025)
- Gill M., Smith P., Wilkinson M.J. 2010. Mitigating climate change: the role of domestic livestock. *Animal*, 4, 323–333. DOI: [10.1017/s17517311109004662](https://doi.org/10.1017/s17517311109004662)

- Hull D., Hull J., Vinter J. 1986. The preferred environmental temperature of newborn rabbits. *Biol. Neonate*, 50, 323-330. DOI: [10.1159/000242616](https://doi.org/10.1159/000242616)
- Johnson H.D., Ragasdale A.C., Eheng C.S. 1957. Influence of constant environmental temperatures on growth responses and physiological reactions of rabbits and cattle. *Mo. Agric. Exp. Sta. Res. Bull.*, No. 648.
- Kalaba M.Z. 2012. Physiological response and stress indicators of California rabbits under intensive condition in Egypt. *Asian J. Poultry Sci.*, 6, 65-78. DOI: [10.3923/ajpsaj.2012.65.78](https://doi.org/10.3923/ajpsaj.2012.65.78)
- Lebas F. 1975. Le lapin de chair, ses besoins nutritionnels et son alimentation pratique. ITAVI, Paris, 50 p.
- Maertens L., de Groot G. 1990. Comparison of feed intake and milk yield of does under normal and high ambient temperature. *J. Appl. Rabbit Res.*, 13, 159-162.
- Maertens L., Lebas F., Szendrő Zs. 2006. Rabbit milk: A review of quantity, quality and non-dietary affecting factors. *World Rabbit Sci.*, 14, 205-230. DOI: [10.4995/wrs.2006.565](https://doi.org/10.4995/wrs.2006.565)
- Marai I.F.M., Habeeb A.A.M. 1994. Thermoregulation in rabbits. *Options Méditerranéennes*, 8, 33-41.
- Marai M.F.I., Ayyat M.S., Abd El-Monem M.U. 2001. Growth performance and reproductive traits at first parity of New Zealand White female rabbit as affected by heat stress and its alleviation under Egyptian Conditions. *Tropical Anim. Health Prod.*, 33, 451-462.
- Marai M.F.I., Habeeb H.A.A., Gad E.A. 2002. Rabbits' productive, reproductive and physiological performance traits as affected by heat stress: a review. *Livest. Prod. Sci.*, 78, 71-90. DOI: [10.1016/s0301-6226\(02\)00091-x](https://doi.org/10.1016/s0301-6226(02)00091-x)
- Marco-Jiménez F., García-Diego F.J., Vicente J.S. 2017. Effect of gestational and lactational exposure to heat stress on performance in rabbits. *World Rabbit Sci.*, 25, 17-25. DOI: [10.4995/wrs.2017.5728](https://doi.org/10.4995/wrs.2017.5728)
- Maya-Soriano M.J., Taberner E., Sabes-Alsina M., Ramon J., Rafel O., Tusell L., Piles M., Lopez-Bejar M. 2015. Daily exposure to summer temperatures affects the motile subpopulation structure of epididymal sperm cells but not male fertility in an in vivo rabbit model. *Theriogenology*, 84, 384-389. DOI: [10.1016/j.theriogenology.2015.03.033](https://doi.org/10.1016/j.theriogenology.2015.03.033)
- Mousa-Balabel M.T. 2004. Effect of heat stress on New Zealand White rabbits' behaviour and performance. *Minufiya Vet. J.*, 3, 125-134.
- Papp Z., Kovács F., Rafai P. 1983. Impact of the climatic environment on large-scale rabbit farm. II. Effect of environmental temperature on the milk production of does and on the trend of losses throughout the suckling age. *MÁL*, 38. 2. 115-120.
- Parigi-Bini R., Xiccato G., Cinetio M., Dalle Zotte A., 1992. Energy and protein utilization and partition in rabbit does concurrently pregnant and lactating. *Anim. Prod.*, 55, 153-162. DOI: [10.1017/s0003356100037387](https://doi.org/10.1017/s0003356100037387)
- Piles M., Tusell L., Rafel O., Ramon J., Sánchez P.J. 2013. Effect of heat intensity and persistency on prolificacy and preweaning kit growth at different stages of the rabbit production cycle. *J. Anim. Sci.*, 91, 633-643. DOI: [10.2527/jas.2012-5455](https://doi.org/10.2527/jas.2012-5455)
- Rafai P., Papp Z. 1984. Temperature requirement of does for optimal performance. *Arch. Exper. Vet. Med., Leipzig*, 38, 450-457.
- Simplicio J.B., Fernandez C. J., Cervera C. 1988. The effect of a high ambient temperature on the reproductive response of the commercial doe rabbit. *Proc. 4th World Rabbit Congress, Budapest, Hungary*, Vol. 3, 36-41.
- Stephan E. 1980. The influence of environmental temperatures on meat rabbits of different breeds. *Commercial Rabbit*, 8, 12-15.
- Szendrő Zs., Papp Z., Kustos K. 1999. Effect of environmental temperature and restricted feeding on production of rabbit does. 2. International Conference on Rabbit Production in Hot Climates, Adana, Turkey, 11-17.
- Takahashi M. 2012. Heat stress on reproductive function and fertility in mammals. *Reprod. Med. Biol.*, 11, 37-47. DOI: [10.1007/s12522-011-0105-6](https://doi.org/10.1007/s12522-011-0105-6)

- Verga M., Luzi F., Carenzi C., 2007. Effects of husbandry and management systems on physiology and behaviour of farmed and laboratory rabbits. *Horm. Behav.*, 52, 122-129. DOI: [10.1016/j.yhbeh.2007.03.024](https://doi.org/10.1016/j.yhbeh.2007.03.024)
- Xiccato G., 1996. Nutrition of lactating does. In: 6th World Rabbit Congress, Toulouse, France, 1, 29-47.
- Xiccato G., Trocino A. 2010. Energy and protein metabolism and requirements. In: De Blas C., Wiseman J. (Eds), *The Nutrition of the Rabbit*, CABI Publishing, CAB International, Wallingford, UK, Cambridge, USA, 83-118.
- Zeferino P.C., Moura T.M.A.S.A., Fernandes S., Kanayama S.J., Scapinello C., Sartori R.J. 2011. Genetic group×ambient temperature interaction effects on physiological responses and growth performance of rabbits. *Livest. Sci.*, 140, 177-183. DOI: [10.1016/j.livsci.2011.03.027](https://doi.org/10.1016/j.livsci.2011.03.027)